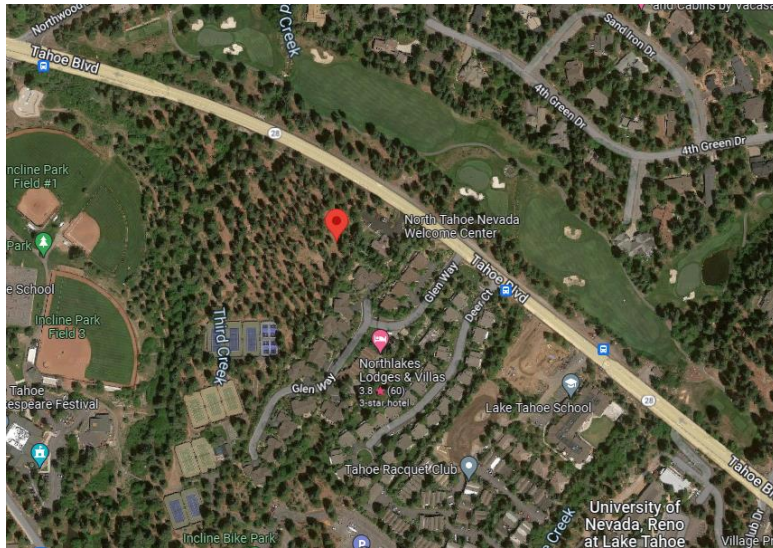




Directions

Incline Village Shuttle Stop at [Incline Village Crystal Bay Visitors Bureau](#),
969 Tahoe Blvd, Incline Village, NV 89451



From South Lake: Take Hwy 50 East towards Carson City about 14 miles. Go left onto Hwy. 28 towards Incline Village at the top of Spooner Summit. Follow along the Lake on Hwy 28 for about 11 miles. The Visitor's Center is on your left across from the golf course.

From Kings Beach: Take Hwy 28/North Lake Blvd East towards Incline Village for about 6 miles. The Visitor's Center is on your right across from the golf course.

Tahoe Adventure Company
Phone (530) 913-9212
P.O. Box 3951, Truckee, CA. 96160
TahoeAdventureCompany.com